

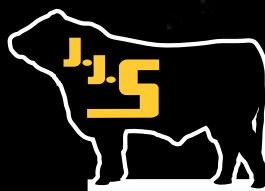


MIDLAND BULL TEST

FINAL SORT SALE
APRIL 4, 2025
COLUMBUS, MT



MILLARS DUKE 816



J.J. SCHECKEL

ANGUS BREEDER



MIDLAND
CHAMPION

2025 MIDLAND BULL SALE *featuring* J.J. SCHECKEL BULLS:

★ 2025 #1 CHAMPION, Efficiency of Gain, Lot #517.

J.J. SCHECKEL IS A HERD THAT PUTS A LOT OF EMPHASIS ON THE COW MAKER
FUNDAMENTALS OF FEET, UDDERS, FERTILITY, AND DOCILITY.

MIDLAND
CHAMPION

#1 EFFICIE



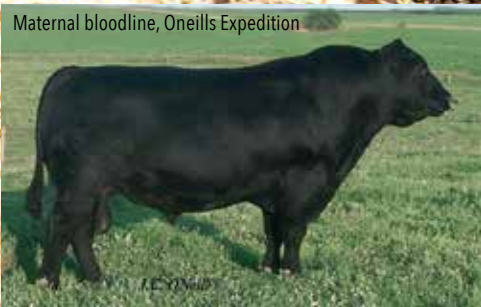
Sire, Millars Duke 816



Dam, Oneills Delia 785



Maternal bloodline, Oneills Expedition



ENCY OF GAIN

517

LOT #517 JJ SCHECKEL *Duker* M232

Birth date 1/28/2024 | Reg # 21059463 | Tag # M232 Group 2 | Class 2 | CONT # 21

B Bar Windy 7 3575 — B Bar Windy 79
 Millars Duke 816 — B Bar Eulima 357
 Millars Queen Lass 5273 — Tombstone 050
 — Millars Queen Lass 3276
 — ONeills Renovation
 ONeills Jock — ONeills Royal Lady 56
 ONeills Delia 785 — Circle Oak Traveler 524
 — ONeills Delia 715 — ONeills Delia 703

ANGUSGS
Powered by NEOGEN™

Birth Weight	100
Weaning Weight	750
205 Day WT / NR	661/96
Dam Production	4 NR 92
MGD Production	2 NR 106

ADG./Ratio	365 Wt/YR	WDA	RFI	RFI EPD	DMI EPD	EFF Rat	Final Wt.	MBT Ind	SCR
3.73/115	1202/100	3.1	-1.82	-0.17	0.04	125	1220	109	38

CED	BW	WW	MILK	YW	HP	MARB	REA	FAT	\$W	\$M	\$C
-5	4.6	75	24	122	8.9	0.55	0.53	0.04	58	54	243

- Here is your 2025 Midland #1 Champion in Efficiency of Gain, with a 125 Efficiency Ratio or 25% higher than the test average. He beat every single animal in group 1 or group 2, of every breed in this test.
- Besides being efficiency champion, this bull earned a huge 115 Average Daily Gain Ratio or 15% higher than the test average.
- 109 Midland Bull Test Ratio.
- Duker M232 is out of a low birthweight sire, Millars Duke 816.
- Duker M232's dam, ONeills Delia 785, produced the Champion Midland Efficiency bull 2 years in a row! She is a heavy boned, large footed power cow in our herd, produced by Iowa breeder, Jim O'Neill. She displays a lot of length, frame, and depth of body. She is a maternal sister to old time famous, Iowa power bull, ONeills Expedition.

Camblin

Maternal Grandam, ONeills Delia 715



J.C. O'Neill

LOT #512 JJ SCHECKEL *Hawkeye* M226

Birth date 1/19/2024 | Reg # 21064886 | Tag # M226 Group 2 | Class 2 | CONT # 3

Ideal 9524 of 5570 6809 — Ideal 5570 of 0452 0534
 Ideal Encore of 9524 Lady — Ideal 6809 of 2P88 0459
 Ideal 3020 of SE 6X7 Lady — Sinclair Extravagant 6X7
 S AV Pioneer 7301 — S AV Final Answer 0035
 Blackcap May Scheckel D103 — S AV Blackbird 5297
 S AV Blackcap May 8962 — S AV 8180 Traveler 004
 S AV May 2397

ANGUSGS
Powered by NEAGEN

Birth Weight	75
Weaning Weight	828
205 Day WT / NR	712/ET
Dam Production	5 NR 103
MGD Production	7 NR 100

ADG./Ratio	365 Wt/YR	WDA	RFI	RFI EPD	DMI EPD	EFF Rat	Final Wt.	MBT Ind	SCR		
3.82/118	1273/106	3.27	-0.29	0.15	0.25	112	1315	110	37.5		
CED	BW	WW	MILK	YW	HP	MARB	REA	FAT	\$W	\$M	\$C
2	2.7	64	37	123	11.3	0.48	0.3	0.04	62	51	236

- This bull earned a huge **118 Average Daily Gain Ratio** or 18% higher than the test average, and **110 Midland Bull Test Ratio**.
- Selling 2/3 interest and full possession.
- Hawkeye M226's sire, **Ideal Encore of 9524 Lady**, is a super deep bull with a highly proven low birthweight and high performance in his offspring. He was the heaviest 365 day weight bull ever for Jorgensen's in their 60 years of breeding cattle. He is also proven to sire excellent maternal cattle and his daughters are performing awesome.
- M226's dam, **Blackcap May Scheckel D103** is donor cow who possesses picture perfect phenotype matched with fertility and a positive production record.



Sire, Ideal Encore of 9524 Lady



Dam, Blackcap May Scheckel D103

LOT #513 JJ SCHECKEL *Cyclone* M227

Birth date 1/23/2024 | Reg # 21064887 | Tag # M227 Group 2 | Class 2 | CONT # 3

Ideal 9524 of 5570 6809 — Ideal 5570 of 0452 0534
 Ideal Encore of 9524 Lady — Ideal 6809 of 2P88 0459
 Ideal 3020 of SE 6X7 Lady — Sinclair Extravagant 6X7
 S AV Pioneer 7301 — S AV Final Answer 0035
 Blackcap May Scheckel D103 — S AV Blackbird 5297
 S AV Blackcap May 8962 — S AV 8180 Traveler 004
 S AV May 2397

ANGUSGS
Powered by NEAGEN

Birth Weight	75
Weaning Weight	927
205 Day WT / NR	802/ET
Dam Production	5 NR 103
MGD Production	7 NR 100

ADG./Ratio	365 Wt/YR	WDA	RFI	RFI EPD	DMI EPD	EFF Rat	Final Wt.	MBT Ind	SCR		
3.64/112	1283/106	3.38	-0.36	0.12	0.19	106	1345	107	35		
CED	BW	WW	MILK	YW	HP	MARB	REA	FAT	\$W	\$M	\$C
-2	2.1	71	38	133	13.4	0.27	0.52	0.05	70	47	222

- Awesome performance and numbers, balanced genetics to create a herd around!
- Cyclone M227's sire, **Ideal Encore of 9524 Lady**, is a super deep bull with a highly proven low birthweight and high performance in his offspring. He was the heaviest 365 day weight bull ever for Jorgensen's in their 60 years of breeding cattle. He is also proven to sire excellent maternal cattle and his daughters are performing awesome.
- M227's dam, **Blackcap May Scheckel D103** is donor cow who possesses picture perfect phenotype matched with fertility and a positive production record.



Sire, Ideal Encore of 9524 Lady



Dam, Blackcap May Scheckel D103

LOT #515 JJ SCHECKEL *Full Back* M229

Birth date 1/24/2024 | Reg # 21064890 | Tag # M229 Group 2 | Class 2 | CONT # 1

Ideal 9524 of 5570 6809 — Ideal 5570 of 0452 0534
 Ideal Encore of 9524 Lady — Ideal 6809 of 2P88 0459
 Ideal 3020 of SE 6X7 Lady — Sinclair Extravagant 6X7
 S AV Pioneer 7301 — S AV Final Answer 0035
 Blackcap May Scheckel D103 — S AV Blackbird 5297
 S AV Blackcap May 8962 — S AV 8180 Traveler 004
 S AV May 2397

ANGUSGS
Powered by NEAGEN

Birth Weight	89
Weaning Weight	760
205 Day WT / NR	664/ET
Dam Production	5 NR 103
MGD Production	7 NR 100

ADG./Ratio	365 Wt/YR	WDA	RFI	RFI EPD	DMI EPD	EFF Rat	Final Wt.	MBT Ind	SCR
2.91/90	1090/90	2.85	-0.15	0.12	0.15	100	1130	96	37

CED	BW	WW	MILK	YW	HP	MARB	REA	FAT	\$W	\$M	\$C
7	0	56	28	99	12.7	0.49	0.44	0.08	56	47	213

- Awesome performance and numbers, balanced genetics to create a herd around!
- Full Back M229's sire, **Ideal Encore of 9524 Lady**, is a super deep bull with a highly proven low birthweight and high performance in his offspring. He was the heaviest 365 day weight bull ever for Jorgensen's in their 60 years of breeding cattle. He is also proven to sire excellent maternal cattle and his daughters are performing awesome.
- M229's dam, **Blackcap May Scheckel D103** is donor cow who possesses picture perfect phenotype matched with fertility and a positive production record.



Sire, Ideal Encore of 9524 Lady



Dam, Blackcap May Scheckel D103

LOT #516 JJ SCHECKEL *Capitalist* M231

Birth date 1/28/2024 | Reg # 21058785 | Tag # M231 Group 2 | Class 1 | CONT # 21

Connealy Capitalist 028 — S A V Final Answer 0035
LD Capitalist 316 — Prides Pita of Conanga 8821
LD Dixie Erica 2053 — C A Future Direction 5321
Ideal 9266 Emulous of 5609 — LD Dixie Erica Oar 0853
Ideal Scheckel K374 — Ideal 5609 of 1281 Marjorie
Ideal 9812 Mary of Rider — Ideal 6206 of 1168 Marjorie
— Sinclair Shadow Rider 1741
— Ideal 6531 of 1281 Mary

ANGUSGS
Powered by NEOGEN

Birth Weight	65
Weaning Weight	788
205 Day WT / NR	757/111
Dam Production	1 NR 111
MGD Production	2 NR 116

ADG./Ratio	365 Wt/YR	WDA	RFI	RFI EPD	DMI EPD	EFF Rat	Final Wt.	MBT Ind	SCR
3.14/101	1179/103	2.94	9.46	0.77	0.89	79	1155	99	36

CED	BW	WW	MILK	YW	HP	MARB	REA	FAT	\$W	\$M	\$C
6	-0.1	66	28	118	16.8	0.5	0.55	0.02	60	41	226

- Rock solid genetics from the low birthweight sire, LD Capitalist 316, out of a model Angus cow at J.J. Scheckel Angus with Jorgenson breeding.
- Capitalist M231's sire, LD Capitalist 316, is a low birthweight bull that is admired by all who see him for his shape and stunning good looks - it is the remarkable way he stamps his progeny with quality, style, performance and impeccable structure that truly sets him apart. His maternal legacy is realized through his daughters - high quality, perfect uddered, and productive... the kind that will be sought for generations!



Sire, LD Capitalist 316



Dam, Ideal Scheckel K374

LOT #518 JJ SCHECKEL *King Air* M233

Birth date 1/28/2024 | Reg # 21058745 | Tag # M233 Group 2 | Class 2 | CONT # 21

LD Capitalist 316 — Connealy Capitalist 028
Connealy King Air — LD Dixie Erica 2053
Pasha of Conanga 557P — Plattmire Weigh Up K360
JJ Scheckels Big Spread H826 — Pastah of Conanga 030L
Lady Scheckel K342 — S A V Atmosphere 6600
Lady Scheckel H736 — Lady Scheckel C32
— S A V Igniter 7940
— Lady Scheckel E233

ANGUSGS
Powered by NEOGEN

Birth Weight	75
Weaning Weight	720
205 Day WT / NR	699/102
Dam Production	NR
MGD Production	1 NR 119

ADG./Ratio	365 Wt/YR	WDA	RFI	RFI EPD	DMI EPD	EFF Rat	Final Wt.	MBT Ind	SCR
3/92	1119/93	2.76	0.21	-0.03	-0.01	100	1085	97	34.5

CED	BW	WW	MILK	YW	HP	MARB	REA	FAT	\$W	\$M	\$C
6	3	59	33	111	13.9	0.43	0.98	0.03	53	58	260

- Rock solid genetics from the low birthweight sire, Connealy King Air.
- M233's dam, Lady Scheckel K342, is a model Angus cow at J.J. Scheckel Angus whose sire, JJ Scheckels Big Spread H826 has proven himself at Midland Bull Test in previous years, winning Champion #1 Efficiency of Gain bull, while also scoring in the top 10 for growth out of over 600 others in competition. Efficient gain is where profits are made.



Sire, Connealy King Air



Dam, Lady Scheckel K342

LOT #519 JJ SCHECKEL *Farm Strong* M237

Birth date 1/29/2024 | Reg # 21059454 | Tag # M237 Group 2 | Class 1 | CONT # 21

B Bar Windy 7 3575 — B Bar Windy 79
Millars Duke 816 — B Bar Eulima 357
Millars Queen Lass 5273 — Tombstone 050
Sinclair Exactly 4U2 — Millars Queen Lass 3276
Ideal 0823 Lady of 0372 — Sinclair Executive 9XV2
Ideal 0372 of 7773 Lady — Sinclair Lady OR109 03S3
— Ideal 7773 of 332 3403
— Ideal 8603 of 5404 327

ANGUSGS
Powered by NEOGEN

Birth Weight	78
Weaning Weight	904
205 Day WT / NR	807/118
Dam Production	3 NR 111
MGD Production	7 NR 108

ADG./Ratio	365 Wt/YR	WDA	RFI	RFI EPD	DMI EPD	EFF Rat	Final Wt.	MBT Ind	SCR
3/96	1211/106	3.2	-0.6	0	0.03	102	1255	105	37

CED	BW	WW	MILK	YW	HP	MARB	REA	FAT	\$W	\$M	\$C
1	1	79	34	128	13.4	0.13	0.79	0.02	86	73	238

- Rock solid genetics from the low birthweight sire, Millars Duke 816.
- His sire, Millars Duke 816, is so consistent in his ability to add quality to his offspring, with added length, volume, calving ease, growth, maternal power and fertility, all with super quiet attitudes!
- His dam, Ideal 0823 Lady of 0372, is an awesome cow in our herd. She comes from the Jorgensen herd where we bought in heavily while adding to our cow herd in the past years.



Sire, Millars Duke 816



LOT #521 JJ SCHECKEL *Elevation* M239

Birth date 1/30/2024 | Reg # 21059509 | Tag # M239 Group 2 | Class 2 | CONT # 21

O C C Juneau 807J — O C C Emblazon 854E
 Coleman Rock 7200 — O C C Dixie Erica 903E
 Coleman Donna 714 — Connealy Onward
 Ideal 0676 Traveler of 8539 — Ideal 8539 of 5463 Blackcap
 Ideal Scheckel K323 — Ideal 8607 of 5609 Blkbrd
 Ideal 0687 Blkbrd of 7458 — Ideal 7425 of 4223 Blackcap
 Ideal 7458 of 4227 Blkbrd

ANGUSGS
Powered by NEAGEN

Birth Weight	80
Weaning Weight	772
205 Day WT / NR	748/109
Dam Production	1 NR 109
MGD Production	3 NR 103

ADG./Ratio	365 Wt/YR	WDA	RFI	RFI EPD	DMI EPD	EFF Rat	Final Wt.	MBT Ind	SCR
3.23/99	1241/103	3.07	0.83	0.22	0.2	94	1200	101	39.5

CED	BW	WW	MILK	YW	HP	MARB	REA	FAT	\$W	\$M	\$C
5	2.3	66	26	119	17.4	0.55	0.27	0.05	62	85	237

- M239's sire, **Coleman Rock 7200**, sires cattle with extra three-dimensional shape, with added performance, in the right size package. His offspring have tons of center body, and explosive muscle shape, in a sound structured package.
- M239 is out of an Ideal Angus cow.
- Balanced EPD's. A bull that you can build a herd around.



Sire, Coleman Rock 7200



Dam, Ideal Scheckel K323

LOT #522 JJ SCHECKEL *Iron Man* M240

Birth date 1/30/2024 | Reg # 21059442 | Tag # M240 Group 2 | Class 1 | CONT # 21

B Bar Windy 7 3575 — B Bar Windy 79
 Millars Duke 816 — B Bar Eulima 357
 Millars Queen Lass 5273 — Tombstone 050
 Ideal 0443 Eldorado Prime — Millars Queen Lass 3276
 Ideal Scheckel K377 — Ideal Encore of 9524 Lady
 Ideal 9216 Jilt of 5609 — Ideal 7574 of 1281 Marjorie
 Ideal 5609 of 1281 Marjorie
 Ideal 5393 of 9259 Jilt

ANGUSGS
Powered by NEAGEN

Birth Weight	83
Weaning Weight	742
205 Day WT / NR	722/105
Dam Production	1 NR 105
MGD Production	2 NR 92

ADG./Ratio	365 Wt/YR	WDA	RFI	RFI EPD	DMI EPD	EFF Rat	Final Wt.	MBT Ind	SCR
2.95/95	1157/101	2.86	5.48	0.4	0.46	85	1120	97	36.5

CED	BW	WW	MILK	YW	HP	MARB	REA	FAT	\$W	\$M	\$C
2	0.5	69	35	118	14.2	0.27	0.62	0.06	79	81	247

- Rock solid genetics from the low birthweight sire, **Millars Duke 816**, out of an awesome Angus cow with Jorgenson breeding.
- His sire, **Millars Duke 816**, is so consistent in his ability to add quality to his offspring, with added length, volume, calving ease, growth, maternal power and fertility, all with super quiet attitudes!



Sire, Millars Duke 816



Dam, Ideal Scheckel K377

LOT #523 JJ SCHECKEL *Crossbow* M241

Birth date 1/31/2024 | Reg # 21058786 | Tag # M241 Group 2 | Class 1 | CONT # 21

Connealy Capitalist 028 — S A V Final Answer 0035
 LD Capitalist 316 — Prides Pita of Conanga 8821
 LD Dixie Erica 2053 — C A Future Direction 5321
 Ideal 9574 Eldorado of 6833 — LD Dixie Erica Oar 0853
 Ideal Scheckel K372 — Ideal 6833 of 3444 Marjorie
 Ideal 8216 of 1168 Marjorie — Ideal 4122 of Res Blkbrd
 Ideal 1168 of 9814 Lady
 Ideal 5552 of 1281 Marjorie

ANGUSGS
Powered by NEAGEN

Birth Weight	70
Weaning Weight	812
205 Day WT / NR	782/114
Dam Production	1 NR 114
MGD Production	5 NR 102

ADG./Ratio	365 Wt/YR	WDA	RFI	RFI EPD	DMI EPD	EFF Rat	Final Wt.	MBT Ind	SCR
3.14/101	1257/110	3.14	2.85	0.3	0.35	87	1225	103	34.5

CED	BW	WW	MILK	YW	HP	MARB	REA	FAT	\$W	\$M	\$C
9	0.5	72	28	119	14.3	0.74	0.95	0.08	76	72	286

- Rock solid genetics from the legendary low birthweight sire **LD Capitalist 316**, out of an awesome angus cow with Joregenson breeding.
- M241's sire, **LD Capitalist 316**, is a low birthweight bull that is admired by all who see him for his shape and stunning good looks - it is the remarkable way he stamps his progeny with quality, style, performance and impeccable structure that truly sets him apart. His maternal legacy is realized through his daughters - high quality, perfect uddered, and productive... the kind that will be sought for generations!



Sire, LD Capitalist 316



Dam, Ideal Scheckel K372

LOT #524 JJ SCHECKEL *Rock* M244

Birth date 2/01/2024 | Reg # 21059511 | Tag # M244 Group 2 | Class 2 | CONT # 21

O C C Juneau 807J ——— O C C Emblazon 854E
 Coleman Rock 7200 ——— O C C Dixie Erica 903E
 Coleman Donna 714 ——— Connealy Onward
 JJ Scheckels Duke H810 ——— Basin Payweight 1682
 Emblynette Scheckel K317 ——— R B Lady Net Worth 308-032
 Emblynette Scheckel H742 ——— S A V Igniter 7940
 S A V Emblynette 4075

ANGUSGS
Powered by NEOGEN

Birth Weight	89
Weaning Weight	730
205 Day WT / NR	715/104
Dam Production	1 NR 104
MGD Production	1 NR 90

ADG./Ratio	365 Wt/YR	WDA	RFI	RFI EPD	DMI EPD	EFF Rat	Final Wt.	MBT Ind	SCR
2.86/88	1198/99	2.96	-0.66	0.15	0.17	105	1150	99	35

CED	BW	WW	MILK	YW	HP	MARB	REA	FAT	\$W	\$M	\$C
1	5.1	76	18	131	12.7	0.42	0.35	-0.01	49	57	228

- A bull from the legend, **Coleman Rock 7200**, and out of an Ideal Angus cow. Balanced EPD's and a bull that you can build a herd around.
- Rock M244's dam, **K317**, is out of **JJ Scheckels Duke H810**, "Some talk it, he did it". H810 is a 6 frame bull who weaned at 886 pounds, yearling weight of 1,400 pounds. He is a past Midland Bull Test graduate who we bought back to use in our program. He was the #1 final test weight bull out of 600. He also scored in the top 5 for ADG and WDA categories. He did all of this while also placing in the top 10 for measured efficiency via computerized bunks where he gained more, on less inputs, than 90% of the competition. He stands at the top of proven real world performance and efficiency.



Sire, Coleman Rock 7200



Dam, Emblynette Scheckel K317

LOT #525 JJ SCHECKEL *Senator* M246

Birth date 2/01/2024 | Reg # 21059459 | Tag # M246 Group 2 | Class 1 | CONT # 21

B Bar Windy 7 3575 ——— B Bar Windy 79
 Millars Duke 816 ——— B Bar Eulima 357
 Millars Queen Lass 5273 ——— Tombstone 050
 S A V Pedigree 4834 ——— S A V Pioneer 7301
 Emblynette Scheckel G508 ——— S A V Blackcap May 4136
 S A V Emblynette 5454 ——— S A V Harvester 0338
 S A V Emblynette 5483

ANGUSGS
Powered by NEOGEN

Birth Weight	71
Weaning Weight	754
205 Day WT / NR	666/97
Dam Production	3 NR 103
MGD Production	2 NR 132

ADG./Ratio	365 Wt/YR	WDA	RFI	RFI EPD	DMI EPD	EFF Rat	Final Wt.	MBT Ind	SCR
3.18/102	1093/95	2.89	0.03	0.09	0.11	100	1125	99	35

CED	BW	WW	MILK	YW	HP	MARB	REA	FAT	\$W	\$M	\$C
8	-0.6	65	34	110	14	-0.1	0.45	0.02	75	76	191

- Rock solid genetics from the low birthweight sire, **Millars Duke 816**, out of a model Angus cow with Schaff breeding.
- His sire, **Millars Duke 816**, is so consistent in his ability to add quality to his offspring, with added length, volume, calving ease, growth, maternal power and fertility, all with super quiet attitudes!
- His dam, **Emblynette Scheckel G508**, is a high-ratioing productive daughter of a rare full-sister to major \$400,000 A.I. bull, **SAV International 2020**.



Sire, Millars Duke 816



Maternal Grandam, SAV Emblynette 5454

LOT #526 JJ SCHECKEL *Iowan* M247

Birth date 2/05/2024 | Reg # 21059460 | Tag # M247 Group 2 | Class 2 | CONT # 21

B Bar Windy 7 3575 ——— B Bar Windy 79
 Millars Duke 816 ——— B Bar Eulima 357
 Millars Queen Lass 5273 ——— Tombstone 050
 R B Tour Of Duty 177 ——— Millars Queen Lass 3276
 Lady Scheckel E223 ——— Werner War Party 2417
 R B Lady Net Worth 308-032 ——— B A Lady 6807 305
 S A V Net Worth 4200
 B A Lady 6807 308

ANGUSGS
Powered by NEOGEN

Birth Weight	95
Weaning Weight	808
205 Day WT / NR	722/105
Dam Production	4 NR 103
MGD Production	3 NR 88

ADG./Ratio	365 Wt/YR	WDA	RFI	RFI EPD	DMI EPD	EFF Rat	Final Wt.	MBT Ind	SCR
3.09/95	1144/95	3.05	-1.16	-0.09	-0.03	104	1175	100	38

CED	BW	WW	MILK	YW	HP	MARB	REA	FAT	\$W	\$M	\$C
0	3.9	73	32	114	13.8	0.25	0.53	0.02	73	86	248

- Rock solid genetics.
- His sire, **Millars Duke 816**, is so consistent in his ability to add quality to his offspring, with added length, volume, calving ease, growth, maternal power and fertility, all with super quiet attitudes!
- His dam, **Lady Scheckel E223**, is another powerful and unique line bred cow by design, with **BA Lady 6807-305** and **BA Lady 6807-308** on both sides of the pedigree. E223 is out of a past donor cow of ours that was a model of thickness and fleshing ability. E223 has six calves on record with us, averaging 115 ratio for weaning, 109 for yearling weight, 102 for marbling, and 99 for ribeye.



Sire, Millars Duke 816



Dam, Lady Scheckel E223

LOT #527 JJ SCHECKEL *Encore* M249

Birth date 2/06/2024 | Reg # 21064828 | Tag # M249 Group 2 | Class 1 | CONT # 21

Ideal 9524 of 5570 6809 — Ideal 5570 of 0452 0534
 Ideal 6809 of 2P88 0459
Ideal Encore of 9524 Lady — Sinclair Extravagant 6X7
 Ideal 3020 of SE 6X7 Lady — Ideal 4428 of 6442 4465
 S AV America 8018 — S AV President 6847
Blackcap May Scheckel J104 — S AV Madame Pride 0075
 Blackcap May Scheckel F4136 — S AV 8180 Traveler 004
 S AV May 2397

ANGUSGS
Powered by NEOGEN

Birth Weight	65
Weaning Weight	782
205 Day WT / NR	734/107
Dam Production	1 NR 107
MGD Production	3 NR 120

ADG./Ratio	365 Wt/YR	WDA	RFI	RFI EPD	DMI EPD	EFF Rat	Final Wt.	MBT Ind	SCR
3.41/110	1215/106	3.13	0.16	0.2	0.23	105	1200	107	34.5

CED	BW	WW	MILK	YW	HP	MARB	REA	FAT	\$W	\$M	\$C
10	-0.7	64	33	113	11.9	0.43	0.7	0.05	69	52	249

- Awesome performance and numbers, low birthweight and balanced genetics to build a herd around!
- M249's sire, **Ideal Encore of 9524 Lady**, is a super deep bull with a highly proven low birthweight and high performance in his offspring. He was the heaviest 365 day weight bull ever for Jorgensen's in their 60 years of breeding cattle. He is also proven to sire excellent maternal cattle and his daughters are performing awesome.
- His dam, **J104** is out of **Blackcap May Scheckel F4136**, who is our 2nd High Value Donor cow and full sister to the 10 million dollar producing breed legend, **SAV Blackcap May 4136**.



Sire, Ideal Encore of 9524 Lady



Maternal Grandam,
Blackcap May Scheckel F4136

» FOUNDATION *in* FUNDAMENTALS «

A sturdy maternal herd from the rocky bluffs of Iowa, breeding for extra Length, Width, Depth, and Mass of Body with Fleshing Ability in a balanced and moderate frame size.

The fundamentals of rock solid Feet, Udders, Longevity, and High Fertility are demanded and required.

In a world of numbers, the real game is still won or lost in the pastures.



**ANNUAL
PRODUCTION
SALE EVERY
NOVEMBER**
Black Friday
the day after Thanksgiving



21582 Hwy 62, Bellevue, Iowa | call: 563-872-4112 | email: josh@jjscheckel.com
follow: JJScheckelAngus | www.AngusCattleGenetics.com